

Multiple Operating Authority

To support customers needs to operate vehicles under more than a single FMCSA Registration + Operating Authority the system supports the ability for a Driver to specify the Authority desired during Logon - the selected Operating Authority will be used in Fuel and Mileage data *and* the parent Registration/Carrier will be used in HOS data.

- [Multiple Operating Authority Feature Summary](#)
- [EXECUTIVE OVERVIEW](#)
- [Feature Requirements](#)
- [Multiple Operating Authority Features](#)
 - [By Terminal / Agent](#)
 - [By Custom Authority Group](#)
 - [Logon Authority Selection](#)
 - [Example Implementation](#)
 - [How the Selected Authority is applied after Logon](#)
- [Setup and Configuration](#)
 - [General Configuration](#)
 - [Authority Configuration](#)
 - [Authority Group or Terminal Authority Configuration](#)
 - [Assignment of Driver and Vehicle Members](#)

The Multiple Operating Authority (MOA) feature allows an organization to segregate and track HOS between various Carriers, as well as, Fuel and Mileage among various Authorities under those carriers.

It is important to first understand that one or more Operating Authority belong to a Single Carrier, this image illustrates this relationship:

- [Detail regarding an FMCSA Registrations can be here](#). *This is the structure applied even if you only operate intrastate.*



When a Driver logs onto an ELD they will be presented with a list of Operating Authorities either from the Vehicles assigned Terminal or a Custom Group which both the Vehicle and Driver have been assigned. The Carrier which that Operating Authority belongs to will be automatically selected.

Carriers and their associated Authorities can be configured in the two previously mentioned ways which can be used: by *Terminal* or by *Custom Group*

- *Carrier Authorities by Terminal* provides use of those "Terminal Authorities" to all ELDs assigned to that Terminal. Terminal Authorities are agnostic of which Terminal the Driver is assigned; any Driver will be able to select from one of the Authorities from the Terminal which that ELD is assigned.
- *Carrier Authorities by Group* provides use of those Authorities to any combination of Driver and Vehicle assigned to the group. Authority Groups will restrict use of which Driver and Vehicle combination are allowed to use the Authority(s). Examples of this scenario would include situations where the Authority may only be used by both a Driver and a Vehicle which are explicitly authorized. For example, if you have 5 Drivers and 3 Vehicles which are authorized for Hazmat you can put these in a single group and the Hazmat authority will only be presented when one of the 5 Hazmat Drivers logs onto one of the 3 Hazmat Vehicles.
- Carrier Authorities may be duplicated between Terminals and Custom Groups if so desired to achieve additional reporting and management segregation.

Reporting of Carrier and Authority use is easily accomplished either by Hierarchical Reporting or by Custom Groups as the following images illustrate: Hierarchical



	Version(s)	Additional Detail
ELD	v5.48+	
Portal	Current	
Web Services for Integration	DataService 2.1	<div>Carrier included on records from the following Operations:<ul style="list-style-type: none">• HOSTotals4 (Current Driver Hours)• HOSLogs4 (Detailed Driver Hours)</div> <div>Operational Authority included on records from the following Operations:<ul style="list-style-type: none">• Rollup Fuel (State Mileage - Summary of Trip Detail)• Rollup Trip (Trip Detail - detail of State Mileage)• Manual Mileage• Manual Fuel</div>

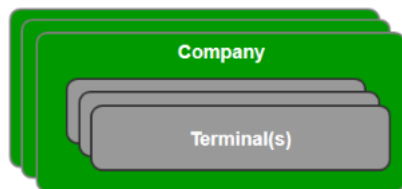
We recommend that you have a firm understanding of FMCSA Registrations before continuing, [Click here for a background on FMCSA Registrations](#)

There are two ways to configure Carrier Registrations to facilitate which Operational Authorities Drivers may select during Logon: *Terminal* and *Custom Groups*.

- Both options allow multiple Carriers with multiple Operating Authorities
- Registration configuration may be duplicated, in whole or in part, between Terminals and/or Custom Groups
- Registrations configured on the Terminal will be presented to *any* Driver logging onto an ELD assigned to that terminal
- Registrations configured on the Authority Group require both the Driver and Vehicle (ELD) to be assigned to the group for the Registrations to appear during ELD Logon

Multiple Operating Authority Features

By Terminal / Agent



Terminal Authority extends the current Terminal Group capability to include Carriers and Authorities authorized for *any* Driver operating a Vehicle assigned to that Terminal.



Configuration by Terminal is preferred over Custom Groups as it requires less maintenance because membership will be managed automatically when Drivers and Vehicles are assigned to terminals

[Click here for more detail about Hierarchical Groups](#)

By Custom Authority Group



Custom, or Ad-Hoc, Authority Groups allow you authorize any Vehicle and Driver combination to use the Authority of the Group. The Driver will be able to select from the Authorities of a Custom Authority Group when they Log onto a Vehicle which is also in the Custom Authority Group they are assigned.

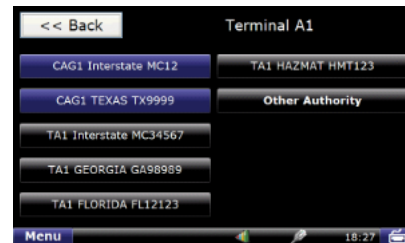
Example: If some Drivers and Vehicles within the organization are Hazmat certified you can create a Custom group for Hazmat and assign applicable Drivers and Vehicles to this group no matter what Company /Terminal they are additionally assigned.



Any Custom Authority selections will be included at the top the Drivers Logon authority selection screen highlighted in blue.

[Click here for more detail about Custom / Ad-Hoc Groups](#)

Logon Authority Selection



During the Logon process the Driver will be presented with a list of Authorities to select from based upon your configuration. In addition, the Driver may select "Other" and manually enter a DOT and Carrier Name.

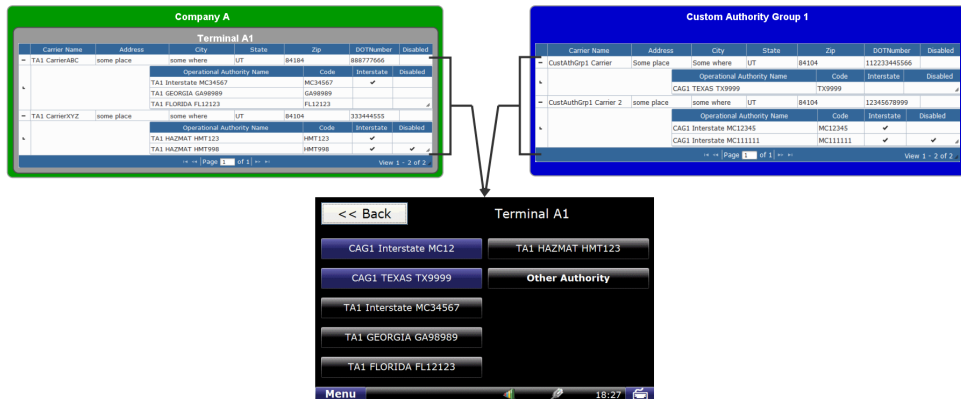


Currently, a maximum of 9 authorities will be provided to the driver in addition to the ability to select "Other". The maximum number of Authorities shown at Logon may be expanded in the future

Note that records for State Mileage and Trip Detail recorded when the Driver was using the "Other Authority" option will have their associated Operational Authority code set to NULL.

Example Implementation

The following shows both Terminal / Agent and Custom Authority Group having multiple Carriers with multiple Operational Authorities (some disabled) being aggregated for Driver Selection during the Logon process of the Device

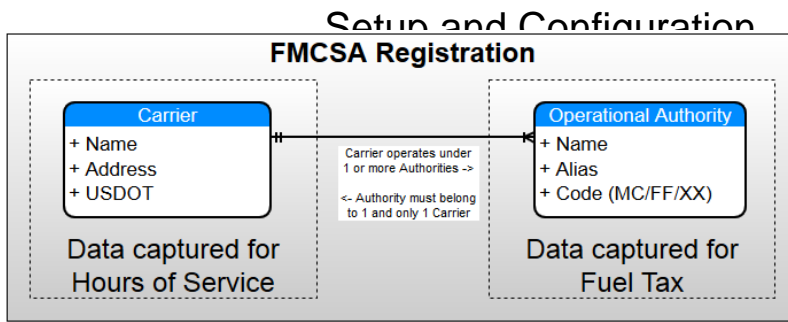


How the *Selected* Authority is applied after Logon

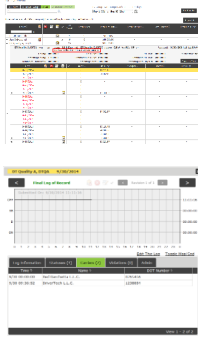
Once the Driver has selected an Authority and continued past the confirmation screen the Carrier and DOT will be automatically selected. The following diagram represents how the data is used

For more information see the [FMCSA Registration detail document](#)

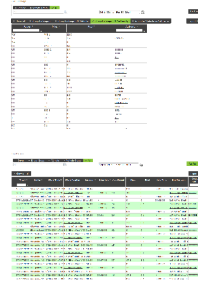
- The Carrier Name, Address, and DOT will be applied to HOS related records (HOS Totals and HOS Logs)
- The Operational Authority Code will be applied to State Mileage and Trip Detail record



Example UI showing **Carrier Name** and **USDOT** recorded on **HOS Totals** and **HOS Log**



Example UI showing **Operational Authority Code** recorded on **State Mileage** and **Trip Detail**



click on images to enlarge

General Configuration

First, there are a few basic items to cover before adding Authority detail:

Portal Menu:

**Management ->
System Settings -
> General Settings**

Database Type

Default: Allows new ELDs to be registered without entry of a [Device Registration Code](#) which will assign the ELD to the default Terminal

MOA: Requires that a [Device Registration Code](#) be entered during registration of a new ELD which will be used to select which Terminal the ELD is assigned to. This further allows your Agents to manage themselves - see [Manager Roles](#)

You will need to contact support to have this setting changed

Enable Hierarchical Reporting Groups

Enabled/Disabled: This option can be changed at any time - see [Reporting Groups](#)

Authority Configuration

In the following we will be referring to parts of an FMCSA Registration when the term Carrier or Authority is used. Because a Registration is comprised of one or more Authorities which belong to a single Carrier, the Carrier must exist and will be automatically selected when Driver or Portal User selects an Authority. In the event that a specific Authority is not required (i.e. HosLogs) the Driver or Portal User would only be presented with a Carrier selection.

There are two distinct ways in which FMCSA Registration can be configured in FleetWatcher which will provide detail of the Registration: **Custom Authority Group** and by **Terminal**

When logging onto an ELD the Driver will be presented with a list of Authorities to choose from based upon those which *BOTH* the Driver and ELD are found to be members of.

Diagram of the ELD Logon Process



Source page access restriction: Click the link below to check if the page is accessible.

[/display/MOA/Device++Lagon+Process](#)

Setup and Configuration



If you recently added or edited the Authority details and the ELD is not presenting the expected set of Authorities to the Driver during logon it is possible the ELD has not yet received the updated *Vehicle and Driver settings*.

Driver and Vehicle Settings updates are queued for delivery to the ELD when changed and will be communicated to the ELD after select actions occur. One of the actions is a Driver Logging onto the ELD - which triggers both Driver and Vehicle settings to be communicated to the ELD within about 15-20 seconds.

If the Driver does not see the expected list of Authorities during Logon then the Driver should Logout, wait 30-60 seconds and attempt logging back in.



An ELD must be assigned to a Terminal for the Authority list to be presented to the Driver during Logon; it is not required that the Terminal have any Authorities configured.

The ELD is assigned to a Terminal during [ELD Registration](#) or can be changed to another terminal using the [FleetWatcher Management -> Vehicles](#) page

Authority Group or Terminal Authority Configuration

Both Terminal Groups and Custom Authority Groups are accessed via Management -> System Settings

Terminal Group Registration Settings:



Custom Authority Group Registration Settings:



Adding Carrier and Authority Details to an Authority Group or Terminal

Select Terminal Group or Authority Group via Management -> System Settings. The process is nearly identical both Custom Authority Groups and Terminal Groups.

1. Click Add Group
2. Enter Group NameClick the "+Add" link in the Carrier Section to add a new Carrier
 - a. If you're adding to a Terminal, the Terminal must be 'saved' and then selected and put into 'edit' mode to enter Carrier and Authority details
3. Click "Submit" to set the new Carrier



After you have entered a Carrier record you will be able to follow a similar process for adding Authorities to the Carrier

1. Click the "Add" button below the Carrier row of which you would like to add an Authority
2. Click "Submit" after entering details about the Authority to set the new record



Once completed you will see something similar to the following. You may repeat the process for adding Carriers and/or Authorities as needed.



NOTE: the configuration will not be saved to the data center until the "Save" button above the Carriers table is clicked and confirmation provided.

Assignment of Driver and Vehicle Members

This is only necessary for Custom Authority Group because, unlike Terminals, membership is not automatically tracked (hence, the Custom aspect of the group)

1. Click the Group you would like to Administer
2. Click the Vehicles or Drivers Tab and then Select "Edit"
3. Use the tools available to add or remove Vehicles from the Group
4. Click "Save" when your satisfied with your selections

Setup and Configuration

