

Vehicle Inspection

The Vehicle Inspection report provides Vehicle Inspection Reports made on the in-cab unit, enabling web portal users to record any repair information when there are vehicle defects recorded. The report can be run for any vehicle or vehicle group.

- [Configure Report](#)
- [Edit DVIR Entry \(for Repairs\)](#)
- [DVIR Workflow](#)

Configure Report

To configure the columns of the spreadsheet, click Columns at the bottom left corner of the screen, and choose which columns you would like to view. You can also move the tiles around to customize the order of the columns. You can select to view only those DVIR entries that have defects by selecting [Has Defect].

DVIR Report

Vehicle

Vehicle Group

Default

Include Reviewed

Today

Get Results

Show Detail

Has Defect

Export To Excel

Actions	Report Date	Vehicle	Driver	Location	Vehicle Condition	Repair Status	Last Update	Repair Date	Repair By	Review Date	Reviewed By	Remarks
	2/13/20 2774	GI	IC	3.7 NE of Ontario	Operational	Unknown	2/13/20					
	2/13/20 2754	SI		3.8 NW of Huron	Operational	Unknown	2/13/20			2/13/20	SI	
	2/13/20 2604	DI		2.4 E of Fairland	Operational	Unknown	2/13/20					
	2/13/20 2399	MI		1.7 NE of Reno	Operational	Unknown	2/13/20					
	2/13/20 2338	CI		4.4 N of West V	Operational	Unknown	2/13/20					
	2/13/20 2338	CI		4.4 N of West V	Operational	Unknown	2/13/20					
	2/13/20 2707	SI		4.8 NE of Nellis	Operational	Unknown	2/13/20			2/13/20	SI	AN
	2/13/20 2852	IR		1.4 NW of Laran	Operational	Unknown	2/13/20					
	2/13/20 2416	IR		2.4 NE of Pasco	HasDefect	Unknown	2/13/20					
Defect Description: OIL ON BRAKE CALIPER												
Truck Engine Compartment: OIL ON BRAKE CALIPER												
	2/13/20 2808	IR		1.5 N of Morris	Operational	Unknown	2/13/20					
	2/13/20 2655	GI		3.2 NE of Ontario	Operational	Unknown	2/13/20			2/13/20	GI	
	2/13/20 2612	CI		2.4 E of Fairland	Operational	Unknown	2/13/20					
	2/13/20 2824	IR		1.5 NE of State	Operational	Unknown	2/13/20			2/13/20	IR	IC
	2/13/20 2492	MI		2.6 NE of Isleta	Operational	Unknown	2/13/20					
	2/13/20 2379	DI		13.5 W of Warren	Operational	Unknown	2/13/20			2/13/20	DI	D
	2/13/20 2356	MI		2.7 NE of Tacon	Operational	Unknown	2/13/20					
	2/13/20 2858	IR		2.3 NE of Santa	Operational	Unknown	2/13/20					
	2/13/20 2780	DI		2.7 NE of Nellis	Operational	Unknown	2/13/20			2/13/20	DI	DI
	2/13/20 2344	MI		1.2 NW of Toller	Operational	Unknown	2/13/20					
	2/13/20 2781	MI		1.1 W of Troy	Operational	Unknown	2/13/20					
	2/13/20 2536	W		1.1 SE of Jerome	Operational	Unknown	2/13/20					
	2/13/20 2597	IR		6.3 E of Cheyenne	Operational	Unknown	2/13/20					
	2/13/20 2686	IR		2.4 SE of Merida	Operational	Unknown	2/13/20			2/13/20	IR	W
	2/13/20 2747	IR		4.5 W of Braden	Operational	Unknown	2/13/20					

Edit DVIR Entry (for Repairs)

When you have defects reported in your DVIR entries, you can make edits to the repair information by clicking on the [blocked URL](#) icon in the **Actions** column of the spreadsheet.

From this window, you can also click on the Location where the DVIR occurred. This will open up a map in your browser in a new tab so you can see the exact location of where the DVIR was entered.

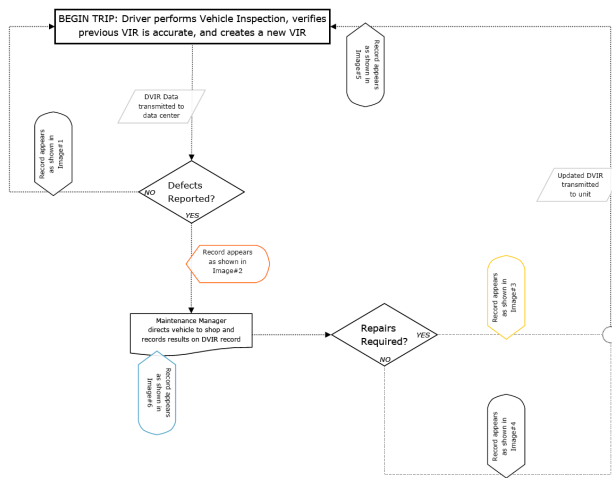
You can edit the **Repaired By**, **On** (Date of Repair), **Repairs Performed** or **No Repairs Needed** (whether repairs were completed or if they were not necessary), and enter any remarks about the repair.

[blocked URL](#)

Once you are satisfied with the DVIR entry and any edits, click [Submit].
To clear the Repair Info, click [Clear Form].

DVIR Workflow

Vehicle Inspection



Legend:

1	Actions	Report Date	Vehicle	Driver	Trailers	Location	Latitude	Longitude	Vehicle Condition	Repair Status	Defect Count	Last Updated	Odometer	Repair Date	Repair By	Review Date	Reviewed By	Remarks
		7/24 12:00	54071	SHAYER, FRANK, 355893	49460,45237	3.0 SE of Ashland, VA	37.7243767	-77.44821	Operational	Unknown	0	7/24 12:00	683219.6					
2		7/24 11:26	76101	DAVILA, RUBEN, 389807	12471,24806	2.5 NW of Channelvie	29.8102818	-95.12645	HasDefect	Unknown	1	7/24 11:27	364645.9					
	Defect Description	Remarks																
	Trailer-12471: Lights	NEEDS NEW PIG TAIL CONNECTOR																
3		7/24 11:26	76101	DAVILA, RUBEN, 389807	12471,24806	2.5 NW of Channelvie	29.8102818	-95.12645	HasDefect	Performed	1	7/24 11:04	364645.9	7/24	John Doe			Order #: 1234 New pig tail connect
	Defect Description	Remarks																
	Trailer-12471: Lights	NEEDS NEW PIG TAIL CONNECTOR																
4		7/24 11:26	76101	DAVILA, RUBEN, 389807	12471,24806	2.5 NW of Channelvie	29.8102818	-95.12645	HasDefect	NotRequired	1	7/24 11:04	364645.9	7/24	John Doe			Repair not required
	Defect Description	Remarks																
	Trailer-12471: Lights	NEEDS NEW PIG TAIL CONNECTOR																
5		7/24 11:26	76101	DAVILA, RUBEN, 389807	12471,24806	2.5 NW of Channelvie	29.8102818	-95.12645	Operational	Performed	1	7/24 11:04	364645.9	7/24	John Doe	7/25 10:26	DAVILA, RUBEN, 389807	Order #: 1234 New pig tail connect
	Defect Description	Remarks																
	Trailer-12471: Lights	NEEDS NEW PIG TAIL CONNECTOR																